



JRE Enterprises presents JRE Exit for Windows 3.1. JRE Exit allows you to: exit Windows, exit Windows and reboot DOS, exit Windows and restart Windows, exit Windows and run a DOS program and restart Windows.

JRE Exit is coded using Microsoft Visual Basic and Microsoft Professional ToolKit for Visual Basic.

### **Menu Items**

About

CP

### **Programs**

JREEXIT

**Windows**

Main Window

Program Window

CP Window

JREXBAT

### **Registration**

Becoming a Registered User

License Agreement

Non-Registration Form

### **Other Information**

Known Problems

Miscellaneous



## **Becoming a Registered User**

We thank you for trying JRE Exit. JRE Exit is freeware and there is no registration costs to use the program.

The License Agreement and Non-Registration Form can be printed when viewed by choosing *File* from the HELP menu, then choose *Print Topic*.

Related topics:

[License Agreement](#)

[Non-Registration Form](#)

## License Agreement

Copyright © 1993 JRE Enterprises  
All Rights Reserved

Installation of JRE Exit on your computer system implies agreement with the terms and conditions below.

Distribution of JRE Exit, its accompanying programs and documentation is considered as is. JRE Enterprises offers no warranties of any kind, expressed or implied. This includes, but is in no way limited to, warranties of JRE Exit merchant ability or fitness for a particular purpose. Under no circumstances will JRE Enterprises be liable for any damages which result from the use of this program or the inability to use it. Exclusion from liability includes, but is not limited to, lost profits, lost savings, or any other incidental or consequential damages.

JRE Exit is distributed as Freeware. You may use JRE Exit at no cost to you. Individual copies of the JRE Exit may be given to friends and associates. You may also upload JRE Exit to the public section of a public BBS.

You may not modify or disassemble JRE Exit, nor distribute any modified or disassembled versions of JRE Exit. JRE Exit may not be included with any other product without written permission from JRE Enterprises.

U.S. Government RESTRICTED RIGHTS: Use, duplication, or disclosure by the Government is subject to restrictions as set forth in subdivision (b)(3)(ii) of the Rights in Technical Data and Computer Software clause at 252.227-7013.

**Non-Registration Form, JRE Exit 1.2**

Copyright © 1993 JRE Enterprises, All Rights Reserved

This non-registration form is good until September 1, 1993. To obtain a 3.5" HD diskette full of JRE shareware, please fill out this form and enclose the proper payment.

Quantity \_\_\_\_\_ x \$ 4.00 = \$ \_\_\_\_\_ -- per shareware diskette  
TOTAL = \$ \_\_\_\_\_

Please include a Check or Money Order in U.S. dollars made payable to JRE Enterprises.

Name \_\_\_\_\_  
Company \_\_\_\_\_  
Address \_\_\_\_\_  
\_\_\_\_\_  
\_\_\_\_\_

From which BBS did you download JRE Exit?  
\_\_\_\_\_

I have read and agree to abide by the license agreement:

Signature \_\_\_\_\_

Please include any comments/suggestions on the following lines or on a separate paper.

\_\_\_\_\_  
\_\_\_\_\_  
\_\_\_\_\_  
\_\_\_\_\_  
\_\_\_\_\_  
\_\_\_\_\_

Mail this form to: JRE Enterprises  
P.O. Box 5643  
Mesa, AZ 85211-5643

## **Known Problems**

An "Invalid File Format" error may occur when starting JREEXIT.EXE. Certain older versions of the following files are incompatible with Visual Basic Version 2.0:

CMDIALOG.VBX

COMMDLG.DLL

These files are supposed to reside in the windows system directory. Other products may have installed these files in the windows directory or elsewhere. Scan all directories for these two files and eliminate any occurrence of these files outside of the \WINDOWS\SYSTEM directory. Make sure the files in the \WINDOWS\SYSTEM directory are the ones shipped with JRE Exit or NEWER. Visual Basic file formats were changed between Version 1.0 and Version 2.0. This is NOT a problem with JRE Exit, but is an incompatibility between Visual Basic 1.0 and Visual Basic 2.0 VBX files.

## **Miscellaneous**

Also available from JRE Enterprises are programs JRE Home Inventory and Win Multiple Configurations. Both programs can be found on CompuServe (WINSHARE forum) and America Online (Windows software) with a keyword of JRE.

JRE Enterprises can be contacted on CompuServe via mail to ID 71162,2311 or contacted on America Online via mail to ID LeeL641756.

## **JREEXIT**

The JREEXIT program provides four ways to exit Windows. 1. Exit to DOS 2. Exit to DOS and reboot the PC 3. Exit to DOS and restart Windows 4. Exit to DOS, run a DOS program, then restart Windows.

The JREEXIT program support three, mutually-exclusive command line switches: The "/x" switch will cause JREEXIT to perform an "Exit to DOS". The "/b" switch will cause JREEXIT to perform an "Exit to DOS and reboot the PC". The "/r" switch will cause JREEXIT to perform an "Exit to DOS and restart Windows". If any switch is used, then JREEXIT will not display a window. JREXBAT is used to perform an "Exit to DOS, run a DOS program, then restart Windows" without displaying a window.

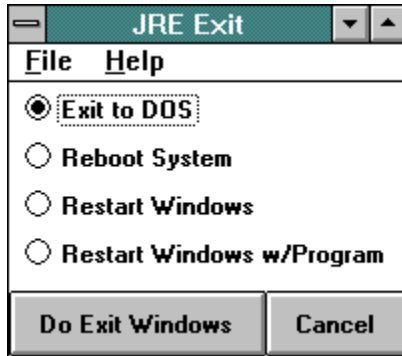
Related topics:

Main Window



## Main Window

The main window is used to select which type of exit Windows to perform.



Click on a button in the picture for additional information on that button.

Select the type of exit by clicking on an option button. A black dot will appear in the selected option button. When the exit option has been selected, press the *Do Exit Windows* key to do the type of exit selected. Press the *Cancel* key to end JREEXIT without exiting Windows.

Related topics:

[Program Window](#)

[CP Window](#)





## Program Window

Selecting the "Restart Windows w/program" option will cause Windows to be stopped, the specified DOS program to be executed; when the DOS program ends, Windows will be restarted. The program window is used to specify which DOS program to execute.

The image shows a dialog box titled "Enter Program Information". It has a title bar with a minus sign, the text "Enter Program Information", and maximize/minimize buttons. The dialog contains two text input fields: the first is labeled "Enter the EXE, COM, or BAT to execute, include the full path:" and the second is labeled "Enter parm data:". At the bottom, there are two buttons: "Proceed" and "Cancel".

Click on a field or button in the picture for additional information on that item.

Enter the DOS program to execute, including the full path and the extension (.exe or .com). Also enter any parm data to be passed to the DOS program. Press the *Proceed* key to continue the "Restart Windows w/program" option. Press the *Cancel* key to abort the "Restart Windows w/program" option and return to the main window.

### EXAMPLES:

To execute EXE files:

Program field = C:\DOS\XCOPY.EXE

Parm field = C:\AUTOEXEC.BAT C:\AUTOEXEC.SAV

To execute COM files:

Program field = C:\DOS\COMMAND.COM

Parm field = /C COPY C:\AUTOEXEC.BAT C:\AUTOEXEC.SAV

To execute BAT files:

Program field = C:\DOS\COMMAND.COM

Parm field = /C C:\AUTOEXEC.BAT

OR

Program field = C:\AUTOEXEC.BAT

Parm field =

When executing BAT files, JREEXIT will use the following defaults: the command processor is COMMAND.COM, it is located in C:\DOS, and uses the "/c" switch to process commands. If these defaults are not correct for your system, you will need to change them by selecting the File menu item and then the CP menu item.

Related topics:

[Main Window](#)

[CP Window](#)





## Command Processor Window

The Command Processor window allows changing the defaults set for the name of the system command processor, where it is located, and what switch it uses for executing commands passed to it. This information is important for having JREXBAT run properly and the JREEXIT option "Restart Windows w/Program" run properly.

Enter Command Processor Information

Enter the Command Processor name, including the full path:  
C:\DOS\COMMAND.COM

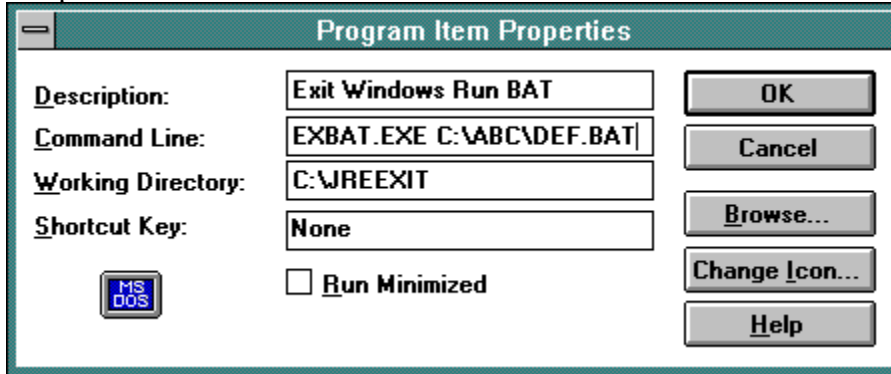
Enter switch used by Command Processor for processing commands:  
/C

Proceed Cancel

Click on a field or button in the picture for additional information on that item.

## JREXBAT

The JREXBAT program is used to perform an "Exit to DOS, run a DOS program, then restart Windows" without displaying a window. This program is useful for running those DOS programs that just won't run in a Windows DOS box correctly. Modify the "Command line:" entry of JREXBATs' Program Properties by appending the BAT file that is to be run, including full path and file extension:



JREXBAT will use the following defaults: the command processor is COMMAND.COM, it is located in C:\DOS, and uses the "/c" switch to process commands. If these defaults are not correct for your system, you will need to change them by running JREEXIT, selecting the File menu item and then the CP menu item.

## **About Menu Item**

Displays the "About Window", which gives the copyright notice and the release number for JRE Exit. Also displayed is various windows system information. This item is found on the main form of program JREXIT by choosing the HELP menu item.

## **CP Menu Item**

Displays the Enter Command Processor Information window. Specify which program is your command processor, where it is located, and what switch is used to pass commands to it. For MS-DOS, the program is COMMAND.COM, it is normally located in C:\DOS, and uses the "/c" switch to pass commands to it. This information is required if you wish to use the JREXBAT program.

## **Exit to DOS**

Selecting the "Exit to DOS" option will cause Windows to be stopped and control returned to DOS.

## **Reboot System**

Selecting the "Reboot System" option will cause Windows to be stopped, control returned to DOS and the PC rebooted.



## **Restart Windows**

Selecting the "Restart Windows" option will cause Windows to be restarted.

## **Do Exit Windows**

Press the *Do Exit Windows* key to perform the selected option.

**Cancel**

Press the *Cancel* key to end JRE Exit without performing any selected option.

**Enter EXE or COM...**

Enter the DOS program to execute, including the full path and file extension, in this field.

**Enter Parm Data**

Enter any parm data to be passed to the DOS program.

**Proceed**

Press the *Proceed* key to perform the "Restart Windows w/program" option.

## **Cancel**

Press the *Cancel* key to abort the "Restart Windows w/program" option and return to the main window.

### **Enter Command Processor Name...**

Enter the Command Processor name for your system, including the full path and file extension.  
For MS/DOS, this is normally "C:\DOS\COMMAND.COM".



**Enter Switch...**

Enter the Command Processor switch that is used for executing commands. For the command processor "COMMAND.COM" this switch is "/C".

**Proceed**

Press the *Proceed* key to update the default Command Processor information that JREEXIT and JREXBAT will use.

## **Cancel**

Press the *Cancel* key to not modify the current Command Processor information and return to the main window.



